



# **2026 Season Launch**

**A Homecoming**

**Monday 15 September 2025**

**6pm**

**This Easy Read is designed for visitors to the launch  
event of the 2026 season.**

# **Welcome to the Royal Exchange Theatre**

Welcome to the easy read guide to help you with your visit to the Royal Exchange Theatre. When visiting us we want you to feel as comfortable and relaxed as possible. We hope this guide will help you, especially if this is your first visit to the theatre.

If you have any suggestions for ways in which we can improve this guide to make it more helpful, please do let us know. You can email us on [access@royalexchange.co.uk](mailto:access@royalexchange.co.uk)

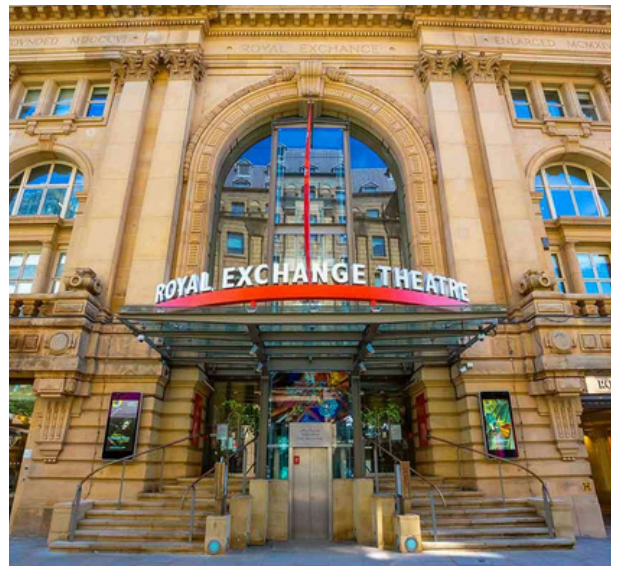
We look forward to welcoming you soon.

# Where is the theatre?

The Royal Exchange Theatre is in Manchester City Centre.  
The address is St Ann's Square, Manchester, M2 7DH.



The theatre has 2 public entrances, Cross St and St Ann's Square, which are steps only.



If you require use of the lift, please go to the St Ann's Square entrance and speak to a member of Royal Exchange staff, who can then take you over to our Old Bank Street entrance to use the lifts there.

# Information about the Royal Exchange Theatre

The Royal Exchange Theatre will open to audiences from 5.15pm.



If you're coming in a wheelchair, you can use the lift to enter the building from St. Ann's entrance.



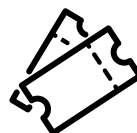
If you are walking, you can use both the St. Ann's entrance and the Cross Street entrance.



When you arrive, you might be asked by a member of the security team if they can look inside your bag. This should only take a few minutes.



You will also be asked to show your ticket confirmation.



You will then go into the Great Hall, which can be quite noisy and busy.

You will also see areas where you can buy souvenirs and refreshments.



You can put your coat in the cloak room.



The theatre will open at 5.30 pm.



# The Great Hall

The Great Hall looks like this:



If you need to go to the toilet they are near the bar.

The entrance to these looks like this.



There are also toilets near the studio theatre. The entrance looks like this:





# The Great Hall

There are 3 bars – they will open before the launch.



If you need to collect your ticket please go to box office. It is at the same end of the hall as the café. It looks like this:



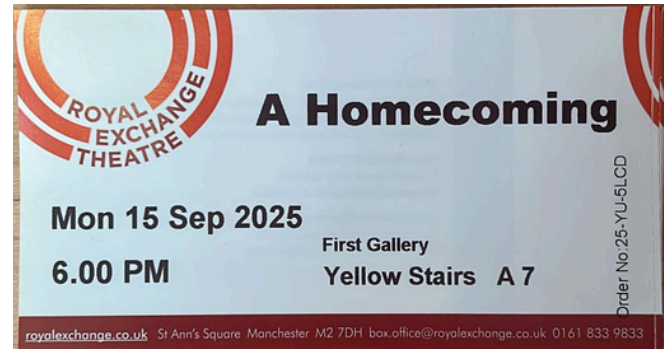
## Asking for help

If you need any help you can always ask one of the Royal Exchange Theatre's member of staff. They will be wearing a red lanyard round their neck – they will be happy to help!

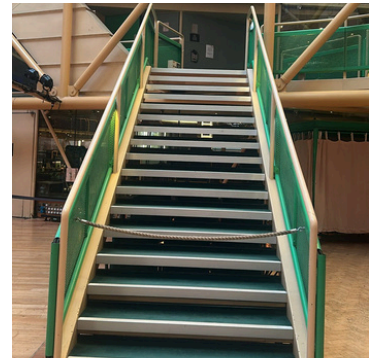
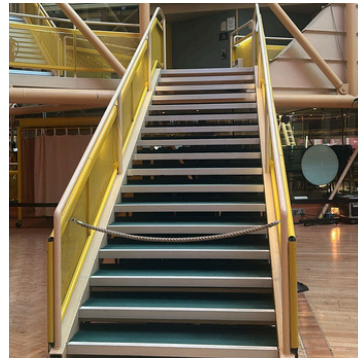
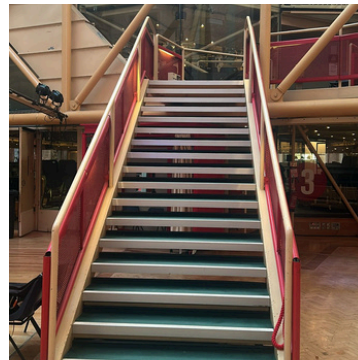
# Entering The Theatre

If you are sitting downstairs, you will need to go through the numbered door which is printed on your ticket –

It looks like this.



If you are sitting upstairs, you will need to go up the coloured staircase which is printed on your ticket. They look like this.



A member of staff will help you find your seat. It will have a number on it that matches the number on your ticket. This looks like this.





# Entering the Theatre

The Theatre is where the audience sit and watch performances.

The theatre is made up of three levels.

The round stage in the middle is where people will be speaking from throughout the launch.





# Live Subtitles

There will be live subtitles throughout the launch via Stagetext. You can access these on your mobile device via this link:



**<https://www.streamtext.net/player?event=RE>**

Once the link is opened, it should immediately start playing.

If you have any issues, please refresh the browser and check your internet connection.

There are also options along the top to alter the appearance to fit your preferences, and a button in the bottom right to hide the header.

# Questions

If you have any other questions please do reach out.

Find information online [here](#)



Email us on [access@royalexchange.co.uk](mailto:access@royalexchange.co.uk)



Call Box Office **0161 833 9833**



Or come in and **talk one of our friendly Box Office** team members, Monday - Saturday from 11am



We hope you enjoy your visit to the Royal Exchange Theatre.

See you soon!