



# **Contents**

**Pages 3 - 8 Information about the Royal Exchange Theatre**

**Pages 9 - 10 Information about the cast and creative team**

**Pages 11 - 12 Information about the set design and costumes**

**Pages 13 - 30 What happens in the story?**

**Page 15- How to contact us**

## **Content warnings for this show**

.

# Information about the Royal Exchange Theatre

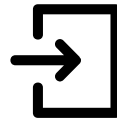
The Royal Exchange Theatre building is open from 12pm



If you're coming in a wheelchair, you can use the lift to enter the building from St. Ann's entrance.



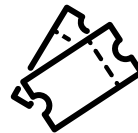
If you are walking, you can use both the St. Ann's entrance and the Cross Street entrance.



When you arrive, you might be asked by a member of the security team if they can look inside your bag. This should only take a few minutes.



You will also be asked to show your ticket.



You will then go into the Great Hall, which can be quite noisy and busy.

You will also see areas where you can buy souvenirs and refreshments.



You can put your coat in the cloak room for £1.



You will be able to take your seats from 5.30pm.



# The Great Hall

The Great Hall looks like this:

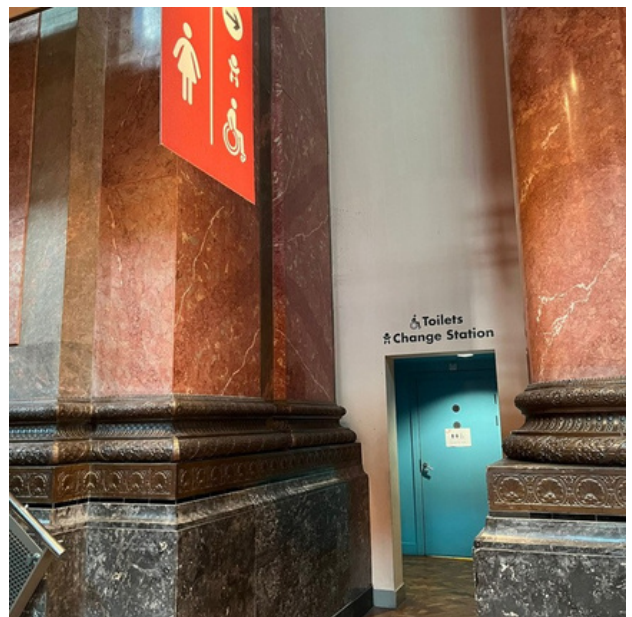


If you need to go to the toilet they are near the bar.

The entrance to these looks like this.



There are also accessible toilets, which include a baby change station.





# The Great Hall continued

If you need to collect your ticket please go to box office. It is at the same end of the hall as the café. It looks like this:



There are also toilets near the studio Theatre. The entrance looks like this:



There are 3 bars and a café – they will open before the performance.



## Asking for help

If you need any help you can always ask one a member of staff. They will be wearing a red lanyard round their neck – they will be happy to help!

# Entering the Theatre

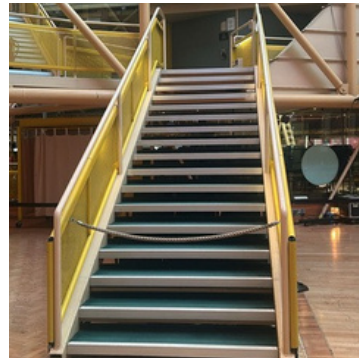
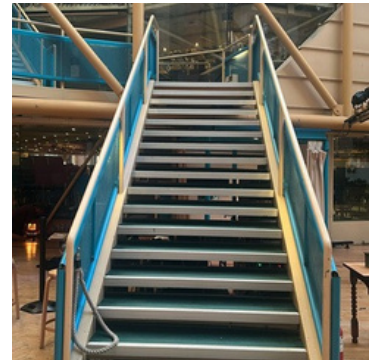
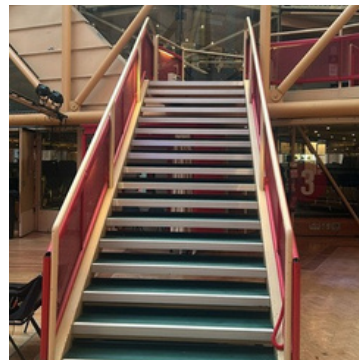
If you are sitting downstairs, you will need to go through the numbered door which is printed on your ticket.

They look like this.



If you are sitting upstairs, you will need to go up the coloured staircase which is printed on your ticket.

They look like this.



A member of staff will help you find your seat. It will have a number on it that matches the number on your ticket.

This looks like this.



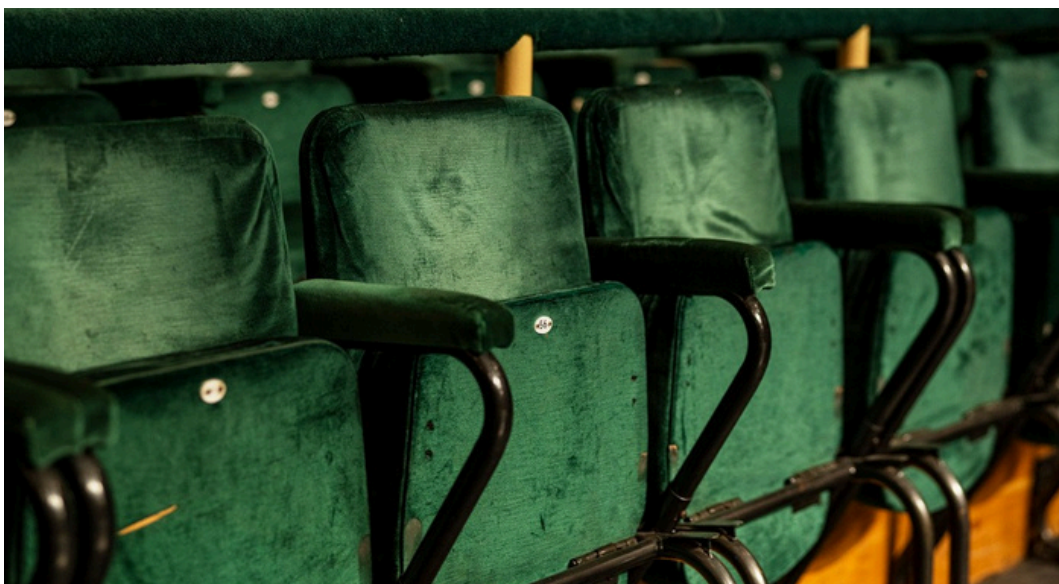


# Entering the Theatre

The Theatre is where the audience sit and watch the performance.

The Theatre is made up of three levels. The ground level is called Stage Level and the upper levels are referred to as first or second gallery.

The round stage in the middle is where the actors perform. If you are sat on the ground floor you may have actors walking past you during the show.



# Information about the show

The first half of the show starts at 6:00 pm, there is then a 20 minute interval. The second half of the show will begin around 7:30pm.



This means the show will end at around 8.30pm.



The play is performed 'in the round' which means that the audience sits in a circle around the action on stage.



Mobile phones and tablet devices are permitted inside the Theatre. However, no photography is allowed during the performance.



Hot drinks are not allowed inside, but cold drinks can be transferred into plastic glasses.



You can come and go from the show. If you need to leave, it is okay to go and come back. During the play, there will be people around who you can ask for help if you need.



You are allowed to make as much noise as you like. The actors really enjoy it when you clap and get excited.

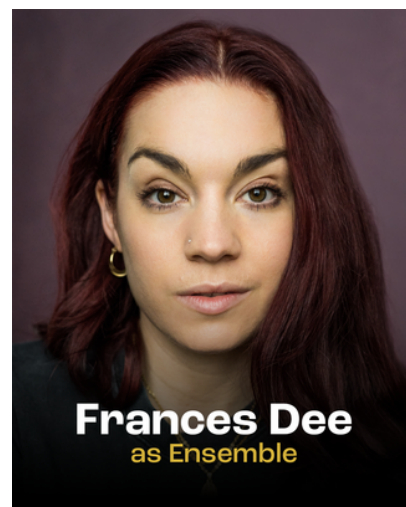
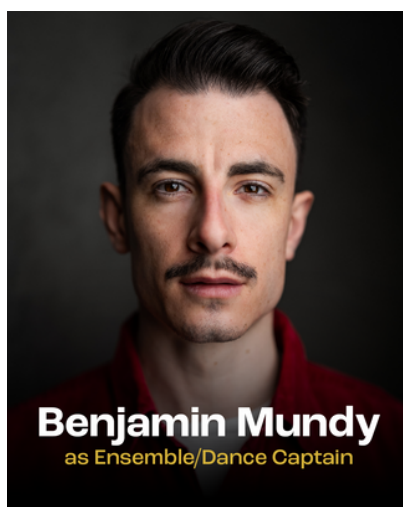
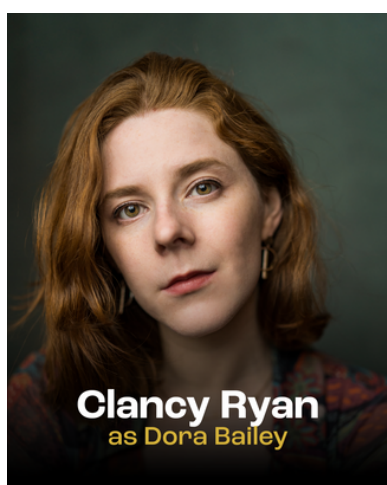
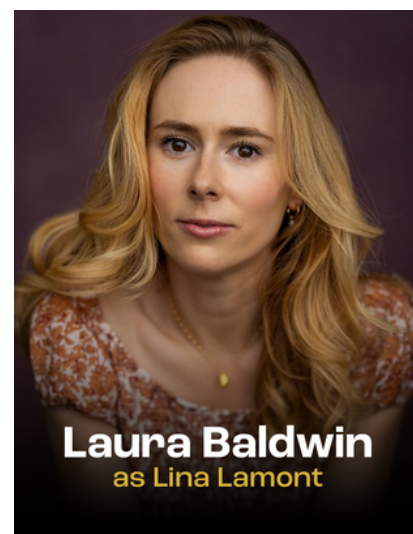
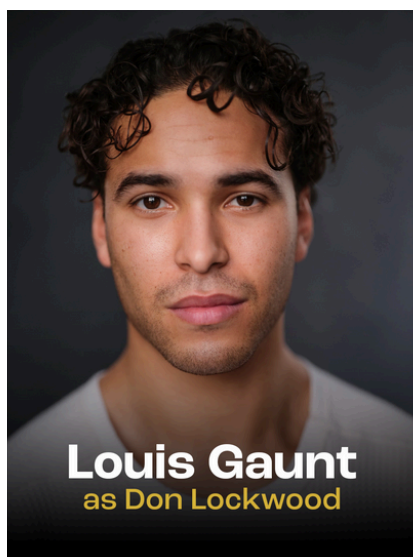


For this sensory adapted performance the intensity of sound and the lighting effects will be reduced, and the house lights will be kept on.



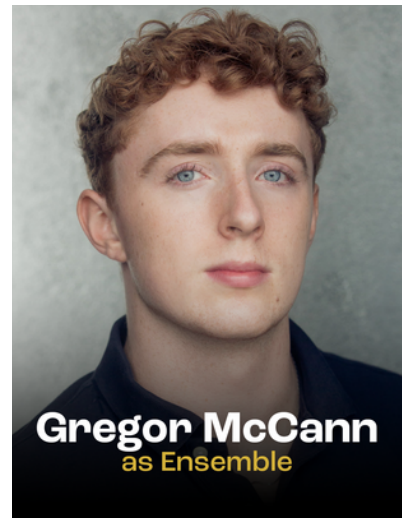
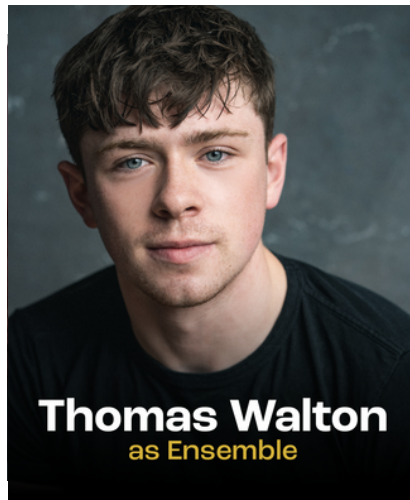
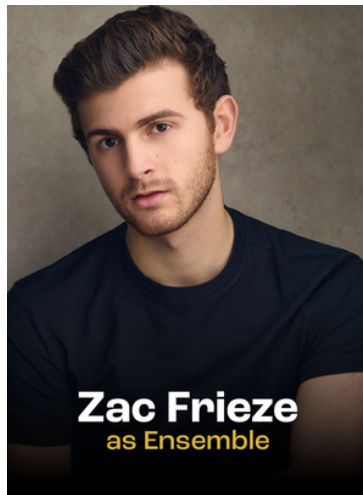
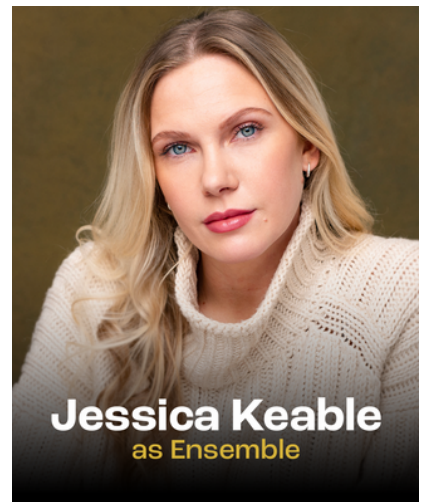
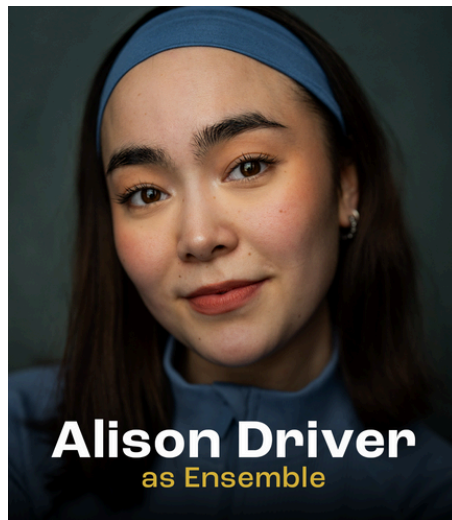
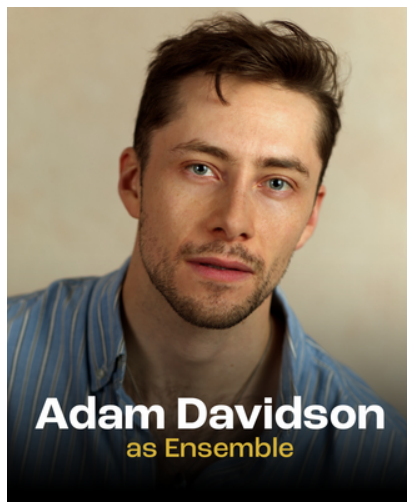
# Information about the cast and creative team

## List of the actors:



The actors in these pictures might be different from the actors performing on stage. This is because we sometimes have 'swing actors', who cover someone's role if they are unable to perform.





### **List of the creative team who worked on the show:**

Director Raz Shaw

Choreographer Alistair David

Music Supervisor Matthew Malone

Set and Costume Designer Richard Kent

Lighting Designer Jack Knowles

Sound Designer Yvonne Gilbert

Fight and Intimacy Director Haruka Kuroda

Voice and Dialect Coach Natalie Grady

Casting Director Will Burton

Associate Director Piers Black

Associate Musical Director Francesca Warren

Assistant Choreographer Benjamin Mundy

Consultant Choreographer Emma Woods

Birkbeck Assistant Director Sadie Mears

Rain Effects by Water Sculptures Ltd

Stage Manager Sarah Barnes

Deputy Stage Manager Kirsty O'Neill

Assistant Stage Manager Georgia Jones

# Information about the set design

The space is fluid, meaning that sometimes the actors will appear on the walkways or in the crowd.

The stage is a large silver circle with extended silver aisles at each end.

There are curved silver panels which come down when we are watching a 'film'. Titles are projected onto them.

There are large lights which come down when the characters are filming a scene.

There are various pieces of set which the cast bring on and off themselves. For the filmed sequences, the set is silver to show us that it is a black and white film.





# Costumes

All the cast are dressed in costumes from the 1920s.

In the show, there are scenes where the actors are pretending to be on film. In these parts they are all dressed in silver to show they are in a black and white film. These are big costumes from the 18th Century.



# What is the story about?

Singin in the Rain is about Hollywood's transition from silent films to 'talkies' (films with synchronized sound) in the 1920s. Don Lockwood, our main character, is a silent movie-star who is famous for his romantic films with his co-star Lina Lamont.

Don faces a crisis of self when he meets Kathy Selden who claims he is not a proper actor, he simply does 'pantomime on the screen'. Don falls for Kathy and finds himself in the process.

Lina has been a successful silent film actress, but her nasal voice is not appropriate for the talkies. Despite vocal training, she is still not up to it and Kathy is hired to be her voice



# What is the story about?

## Opening

The show begins with movie star Don Lockwood listening to the radio before the night of his movie premiere.

He performs a tap dance to a drum beat before putting on his coat and hat and leaving.

## Act 1

The scene opens with radio journalist Dora Bailey narrating the arrival of the stars to the premier of Don Lockwood and Lina Lamont's latest film 'The Royal Rascal'.

We are introduced to RF Simpson, the films producer, Roscoe Dexter, the films director, and Cosmo Brown, musical director and Don's best friend. Before Don Lockwood and co-star Lina Lamont enter the premiere. Don tells Dora Bailey about his past and how he and Cosmo Brown used to perform Vaudeville. Don and Cosmo then perform the tap number 'Fit as a Fiddle'.

We watch Don and Lina's film 'The Royal Rascal'. It is a black and white silent film. Meaning we cannot hear what they say, instead we read their lines on the screen after they say them. Although this is a movie, in the show this is performed live with costumes and a screen which drops in to signify we are watching a movie.

Dora Bailey announces the end of the film and invites the cast to celebrate the film's success in front of the film's audience.



# What happens in the story?

## Act 1

Don makes a speech of thanks while Lina tries to get a go on the microphone, Don prevents her from speaking. Away from the cinema audience, Lina protests not being allowed to speak to the studio team, RF Simpson makes an excuse about the publicity department.

Inspired by celebrity magazine coverage, Lina calls Don her fiancé.

Don says that it's simply publicity and that there is nothing between them. Lina and RF Simpson head to RF Simpson's celebration party.

Don convinces Cosmo to leave the cinema dressed in his coat in order to fool his fans and enable Don to walk to the party.

Walking down Hollywood Boulevard, three fans spot Don.

Meanwhile Kathy Selden rushes on, clearly running late, she waits for a public tram. The fans approach Don, Don excuses himself pretending not to be Don Lockwood, and rushes to Kathy claiming he's an ordinary man and that she is his girlfriend. The fans are fooled and leave.

Kathy, frightened by being approached by a stranger, tries to get Don to leave her alone. After recognising Don's face, she mistakes him for a famous gangster and calls over a policeman. The policeman recognises Don and greets him by name, clearing up the confusion.

# What happens in the story?

Kathy and Don introduce each other; Don uses his movie star status to make a romantic move on Kathy. Kathy negates Don's advances by dismissing his movies, stating she's only seen one and is not interested in moviestar's pantomime acting, and that she, an actor herself, is interested only in 'real acting', that is the great parts of theatre.

The conversation sours and they argue, each ridiculing the other.

There is a break in reality of the scene where Don performs *You Stepped Out Of A Dream*.

We are brought back to reality by more pedestrians who recognize Don and flock to him, grabbing him they tear off his sleeve. Don escapes and leaves the stage, Kathy exits for her tram.

The fans begin to dance, changing costumes they become the dancing attendees of RF Simpson's party.

RF Simpson's party is in full swing full of drinking and dancing. Lina makes a grand entrance.

Don enters the party, all the guests greet him celebrating the success of the film. Shaken by the conversation with Kathy, Don turns to Cosmo, and asks for him to affirm that he's a good actor.

RF Simpson announces a surprise – the screening of a talking picture – a new technological invention. The stage clears leaving a man in a silver suit, this and the spotlight show that we are watching a film.

# What happens in the story?

The man on film speaks, announcing his demonstration of a talking picture. The film ends. RF Simpson announces that The Warner Brothers, another film studio, are making a talking picture – The Jazz Singer.

Dexter claims talking pictures will never take off.

RF Simpson returns to celebrating Don and Lina and their film, announcing another surprise.

The lights are dimmed and a huge pineapple cake is wheeled in. Kathy bursts out of the cake, her face dropping as she looks up to see Don, who starts to laugh and tries to talk with Kathy, asking if she will perform Hamlet tonight.

Other show girls rush on and Kathy joins them in dancing and performing 'All I Do is Dream of You'

After the song, Don pursues Kathy playfully mocking her. Kathy, exasperated, grabs a cream cake, aiming for Don she throws it into Lina's face. Lina is furious and rushes for Kathy, Don grabs Lina and carries her away. Kathy runs out. The party scene begins to dissolve as the stage clears. Don seeks Kathy, asking a Butler which way she went.

The scene opens in Monumental Pictures studio, film crew carry film props across the stage, they are preparing for the new Lockwood-Lamont picture.

# What happens in the story?

Cosmo enters with Ros, they discuss the Warner Brothers' talking picture *The Jazz Singer*, which has been a huge success. Don tells Cosmo the story of *The Dueling Cavalier*, the new film they are starting to make today, a French Revolution romance.

Cosmo jokes that they simply re-release the old films as the plot is the same.

Don says Kathy said the same thing, and says he can't stop thinking about her. Don is depressed by not finding her. Cosmo aims to cheer Don up, saying 'what's the first thing an actor learns? The show must go on'. He launches into a song and dance to cheer Don up: 'Make Em Laugh'. He performs the comedy number with use of props carried across the studio by staff.

Cosmo lies exhausted on the floor, film crew carry him out on a stretcher as the stage is set for the filming of *The Dueling Cavalier*.

Roscoe Dexter and the film crew prepare for filming, calling Lina to set. She arrives in a huge bouffant 18th Century dress and towering wig, followed by a wardrobe hand. Lina nearly falls over from the weight of the wig.

Don is called to set, in a cavalier costume. Lina, jealous of Don's affection for Kathy, taunts him about the fact he's been searching for Kathy. Lina announces she got Kathy fired from her job at the Coconut Grove. Don is furious.

# What happens in the story?

Dexter narrates the film's action, directing Don and Lina. While they act out the film's romance Don and Lina fight about Kathy, culminating in an on-screen kiss. The filming ends. Lina claims Don couldn't kiss her like that without meaning it. Don states he'd rather kiss a tarantula, and demands a tarantula is brought on.

RF Simpson arrives and interrupts the studio, demanding that filming stop immediately and the studio shut down for a few weeks because after the success of *The Jazz Singer*, they must transform *The Dueling Cavalier* into a talking picture.

RF Simpson gives Cosmo a promotion, making him head of the new music department.

They all exit the stage.

On another soundstage at Monumental Studios, a big and lavish musical number is being filmed for another new film. Director Sid enters and sits in the director's chair.

A man in a tuxedo suit sings *Beautiful Girls*, while a chorus line of dancers dance, including Kathy Seldon.



# What happens in the story?

The song ends and Sid announces a lunch break.

RF Simpson enters. Sid tells RF Simpson about Kathy as great new talent and suggests that she's cast in a named role in the next film. Sid calls Kathy over to meet RF Simpson, she sings for him performing 'You Are My Lucky Star.'

RF Simpson agrees to cast her in the role of Kid Sister. Don enters, this spurs Kathy to interrupt RF Simpson's offer and declare that she's the woman who threw a cake in Lina's face, believing she won't be allowed to take part because of this.

Don declares the role is a brilliant thing and refuses RF Simpson's suggestion it would make him or Lina unhappy, reminding RF Simpson that while the Coconut Grove may do what Lina says RF Simpson is the head of the studio not Lina.

It's agreed that Kathy will have the part. All exit bar Kathy and Don. Kathy asks Don if he's really been looking for her all over town, and at Don's request agrees to go for lunch with him.

Kathy and Don enter a deserted sound stage, lights hang down, a ladder stands in one corner, and a big fan in another. Kathy quizzes Don about his relationship with Lina, revealing that she has in fact watched all his films and reads all of the fan magazines. Don asserts that the magazine narrative of him and Lina is false.

# What happens in the story?

Kathy and Don laugh at their first meeting.

Don tries to tell Kathy how he feels about her but states he needs the right setting to do so.

Don sings You Were Meant For Me. The stage is cleared after the song.

Lina and Miss Dinsmore, her Vocal Coach, are lying on the floor stretching. Miss Dinsmore performs vocal exercises, in a rounded full voice. Lina repeats them, impossibly nasal and flat but totally unaware of anything wrong with her voice. They practice Lina's line, "And I can't stand him", to little progress.

They exit.

Don and his eccentric Vocal Coach are in the middle of a lesson, Don is having very little trouble with the pronunciation tasks.

The Vocal Coach leads Don through a series of tongue twisters. Cosmo enters, with Don they begin to joke, overperforming the tongue twisters and mimicking the Vocal Coach.

Don and Cosmo turn the tongue twisters into a song, performing 'Moses Supposes' along with a tap dance number.

They exit the stage.

# What happens in the story?

The stage is set for the filming of *The Dueling Cavalier*, Lina is seated on a bench beside a large fake bush in which sits a microphone. Dexter sits in a Director's chair. Film crew are ready with a camera and sound equipment.

They begin filming. Lina's lines are barely audible. Dexter cuts the filming short, reminding Lina there is a microphone in the bush. They begin filming again, the sound cuts in and out as Lina speaks with dramatic turns of her head. Dexter cuts filming again. They wire a microphone to a flower which they place at the centre of Lina's chest.

They begin filming again; however, the lines are undercut by the sound of Lina's heartbeat which the microphone picks up. Dexter cuts filming. The microphone is moved to Lina's shoulder. They begin filming again.

RF Simpson enters and pulls on a microphone wire announcing, "this is dangerous", Lina is sent flying backwards as RF Simpson pulls the wire attached to her.

Dexter calls "Cut". The filming ends and all exit.

Outside a movie theatre a man wears a sandwich board reading 'Major Studio Preview Tonight'. We see people enter the theatre.

Cosmo and Kathy enter. Cosmo apologises that Kathy will have to sit separately from Don so that Lina does not see her.

They enter the theatre.

# What happens in the story?

The film's title is projected on a large hanging arch, announcing the start of the film. All the set we have seen in filming is reproduced in silver, the film starts to play and Lina enters on screen.

The film plays on, Don enters, and they start a melodramatic romance dialogue. Lina's lines fade in and out of audibility where she has turned to and from the microphone. Lina taps Don on the shoulder with a fan, due to the placement of a microphone, the sound is loud like she's hit him with a mallet. The film's audience begin to heckle.

The film grinds to a tragic halt.

Outside the movie theatre Lina, RF Simpson, Dexter and Cosmo are huddled together looking miserable. Except Lina, who looks pleased with herself.

Audience members file out laughing at the film.

RF Simpson declares they're all ruined while Dexter says they can't release the film. RF Simpson says it is booked to be released across the country in six weeks. More audience members file out declaring it the worst film they've ever seen.

All exit.

# What happens in the story?

Don, Cosmo and Kathy are all seated on a large round sofa in Don's house.

Don declares the house will be up for auction due to the film's failure and declares the end of his career. Cosmo and Kathy comfort him, Cosmo jokes that Don could start vaudeville again and sings some lines of 'Fit As a Fiddle.'

This inspires the trio to turn *The Dueling Cavalier* into a musical to save the film before its release in six weeks. In answer to the question about what to do about Lina's voice, Cosmo suggests Cathy sing and speak her lines – explaining the idea through a pantomime where Cathy sings and Cosmo mimes in front of her.

Delighted to have made a plan to save the picture, the group then realise they've talked through to the next morning and perform 'Good Morning'. The song ends with Kathy and Don in a deep kiss. Cosmo exits.

Don walks Kathy home, there is a sound of thunder. They say goodnight.

Kathy exits.

Don stands in the street outside Kathy's house. It begins to rain on the stage.

Don performs 'Singin' In The Rain'.



# What happens in the story?

## Act 2

R.F Simpson's office. We begin with the ensemble holding individual phones, answering them and singing 'Good Morning'.

Cosmo enters and gives Don a proposal he's been working on, RF Simpson takes a brief look and declares it's wonderful, signing off the plan to replace Lina's voice with Kathy's, with the warning that it must be kept a secret from Lina.

They turn to finding a name for the new musical picture.

They reprise 'Good Morning'.

Cosmo suggests The Dancing Cavalier, which RF Simpson agrees on.

On a Recording Stage at Monumental Pictures we watch Kathy re-recording Lina's song for the upcoming film.

We see the projection of Lina's performance on film – represented by Lina dressed in silver standing in a silver spotlight – accompanied by Lina's voice over the speaker poorly performing the last lines of 'Would You?' from The Dancing Cavalier.

The film is played again, this time silently. Kathy then performs 'Would You?' which is recorded to replace Lina's voice in the final film.

# What happens in the story?

Don and Cosmo enter. Don and Kathy embrace in a long kiss.

Kathy then records some of Lina's lines in the film, we watch the film played back newly dubbed with Kathy's voice.

Kathy and Don embrace again, and Don declares he cannot wait for the picture to be finished so that they can be together without secrecy.

The moment is broken by Lina's arrival with her friend Zelda, who has told Lina about the plot to replace her voice with Kathy's.

Lina is incensed and furious especially when Don declares his love for Kathy. Lina promises to get Kathy removed from the studio and storms out.

Don reprises 'Would You?'

In Lina's dressing room, Lina and Zelda discuss what Lina will do, she promises not to take it lying down. Zelda exits. Lina reflects on Don's rejection, stating she doesn't understand it.

She then performs 'What's Wrong With Me?'

In RF Simpson's office, RF Simpson paces while Roscoe Dexter stands deep in thought. Cosmo enters hurriedly. All are distressed about the fact Lina has found out about Kathy. But RF Simpson promises to give Kathy a career of her own after the film is released.

# What happens in the story?

Discussing *The Dancing Cavalier*, RF Simpson demands they add a tap-dancing number to the film. In response Cosmo pitches a modern section within the film in which the hero is a Broadway hooper.

Cosmo instructs everyone to close their eyes and imagine the musical number. We see an extended dream-like ballet performed by Don and the ensemble.

The club owner is angered by this extended dance – seeing Don as having crossed a boundary. He chases Don out of the club and takes the girl away.

Don re-enters, his waistcoat has changed signifying that he has found himself.

The dance comes to an end and we see Cosmo huffing and puffing as if he's just acted out the entire number.

In a spotlight, Dora at a microphone announces we are outside of the Graumann's Chinese Theatre in Hollywood for the premiere of Monumental Picture's *The Dancing Cavalier*.

The lights come up on RF Simpson and Dexter in the wings of the theatre while the film is being shown. Ros enters with newspapers which declare Lina's incredible singing voice and musical talent in the film, causing disarray in the group.

# What happens in the story?

Lina enters in an evening gown, and states she has given an exclusive interview with every newspaper in town, overthrowing the studio's publicity plan to credit Kathy for her own voice by naming it her own.

RF Simpson protests, highlighting that this narrative takes Kathy's career away and that people simply don't act like that.

Lina is too enthused with her own publicity to back down.

Inside the theatre we hear the film's audio play out with Kathy's voice reading Lina's lines alongside Don in the final moments of the film. At the film's end we hear a prerecorded track of the audience applauding going wild for the film.

The recorded audience applause and responses continue throughout this scene.

Backstage Lina is triumphant, Don and RF Simpson are pleased but a little disturbed by Lina's response. Lina and Don are sent out to bow, we see them take to the movie theatre's stage in a spotlight. They return to the wings. Don and Kathy embrace.

Lina high on the film's success declares that Kathy will continue to double for her voice. Don argues with her, stating that Kathy only dubbed her voice to save the film this once.

# What happens in the story?

Don and Lina take to the stage to bow again before returning back stage, where Lina continues to fight for Kathy to act as her voice double, insisting that the audience love her and that monetary success of the film will mean that RF Simpson cannot deny her, while Kathy's studio contract means that Kathy has to do as RF Simpson says.

Lina and Don return to the stage for another bow.

Backstage again, Lina is increasingly overcome by her stardom and insists that she make her own speech. She dashes back onstage and makes a condescending speech to the film's audience, her voice causes the audience to start murmuring in surprise, before members of the audience begin to demand she sings.

Lina dashes to the wings unsure what to do. Don hatches a plan and suggests that Kathy sing for Lina again, RF Simpson insists she does. Feeling betrayed, Kathy agrees to sing on the condition Don never sees her again.

We see Lina take to the stage in a spotlight, while Kathy takes her place behind an imagined curtain. Kathy performs 'Would You?' while Lina mimes.

In the wings we see RF Simpson, Don and Cosmo watching, RF Simpson instructs technicians to reveal Kathy, a spotlight turns to Kathy and the spectacle is revealed. The crowd starts laughing, Lina, oblivious to what is happening continues to sing. Cosmo pushes Kathy aside and continues the song – Lina realises what has happened and runs off stage while Kathy begins to run through the audience to make her own escape.

# What happens in the story?

Don calls after Kathy and declares to the audience that Kathy has been the voice they have heard and loved tonight and that she is real star of the picture.

Don sings 'You Are My Lucky Star.'

Don and Kathy come together, they embrace and kiss.

End of Act 2.

The cast return to stage to take their bows.

Encore

The company enter all dressed in raincoats, carrying umbrellas.

It begins to rain and they perform 'Singin' In The Rain.'

# Questions

If you have any other questions please do reach out.

Find information online [here](#)



Email us on [access@royalexchange.co.uk](mailto:access@royalexchange.co.uk)



Call Box Office **0161 833 9833**



Or come in and **talk one of our friendly Box Office** team members, Monday - Saturday from 12pm



We hope you enjoyed your visit to the Royal Exchange Theatre.

See you soon!