



# EVEN THESE THINGS



Written by Rory Mullarkey.  
Directed by James Macdonald.

This guide will help you prepare for your visit to the sensory adapted performance of **EVEN THESE THINGS**.

# Contents

**ARRIVING AT THE THEATRE** **PAGES 3 - 4**

---

**THE GREAT HALL** **PAGES 5 - 6**

---

**ASKING FOR HELP** **PAGE 7**

---

**THE THEATRE** **PAGE 7**

---

**ENTERING THE THEATRE** **PAGE 8**

---

**WATCHING THE SHOW** **PAGES 9 - 10**

---

**THINGS YOU WILL SEE IN THE SHOW** **PAGE 11**

---

**MEET SOME OF THE PEOPLE IN THE SHOW** **PAGE 12**

---

**THE STORY** **PAGE 13**

---

**THE STAGE** **PAGE 14**

---

**THE COSTUMES** **PAGE 15**

---

**NEED HELP?** **PAGE 16**

# Arriving at the theatre



The theatre opens at 12pm.



You can enter through St Ann's entrance or Cross Street entrance.



If you use a wheelchair, you can enter through St Ann's entrance.

There is a lift.



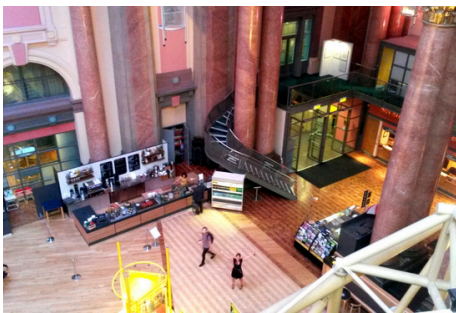
A member of staff may check your bag.

This should only take a few seconds.

# Arriving at the theatre



You will also be asked to show your ticket.



You will enter the Great Hall.  
It may be busy and noisy.

You can buy food, drinks and souvenirs in the Great Hall.



You can leave your coat in the cloakroom.

It costs £1.

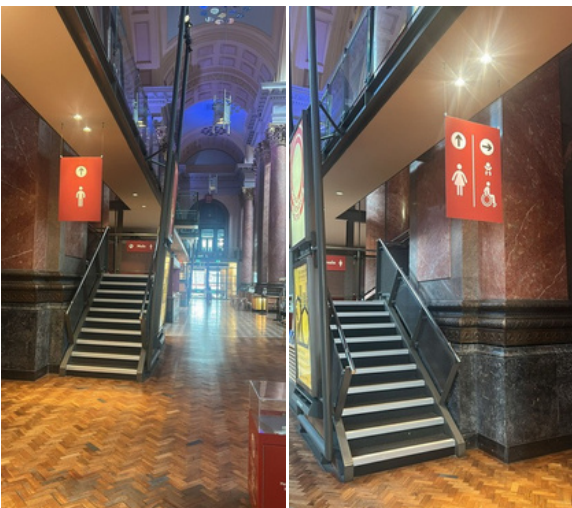


You can go to your seat from 5:30pm.

# The Great Hall

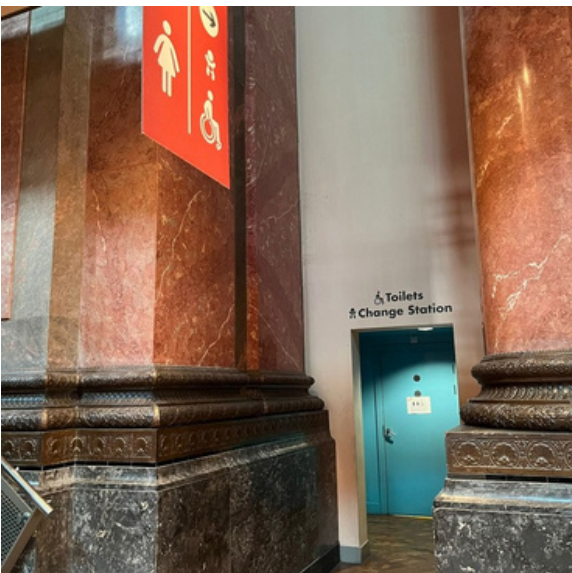


The Great Hall looks like this.



The toilets are near the bar.

The toilet entrance looks like this.



There are accessible toilets.

Here, there is also a baby changing area.

# The Great Hall



If you need your ticket, go to the Box Office.

It looks like this.



There are more toilets near the Studio Theatre.



There are bars and a café in the Great Hall.

They are open before the show.

# Asking for help



If you need help, please ask a member of staff.

Staff wear red lanyards.

# The theatre



This is the theatre.

There are seats upstairs and downstairs.



The actors perform on the round stage in the middle.

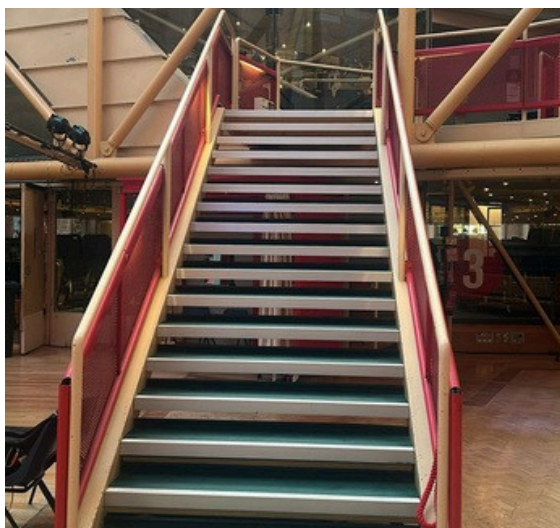
Some actors may walk close to the audience.

# Entering the theatre



If you are sitting downstairs, go through the numbered door on your ticket.

The doors look like this.



If you are sitting upstairs, use the coloured staircase shown on your ticket.

The stairs look like this.



A member of staff will help you find your seat.

Your seat number matches the number on your ticket.

# Watching the show



The show starts at 6pm.

There is no break.

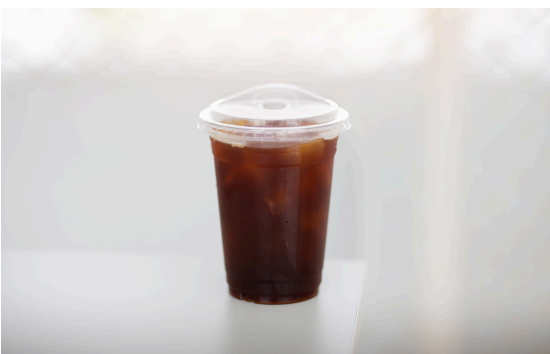
The show runs for about 1 hour and 45 minutes.



The audience sits around the stage.



Please do not take photographs.



Hot drinks are not allowed.

Cold drinks are allowed in plastic cups.

# Watching the show



You can come and go from the show.

If you need a break, you can leave and return.

Staff can help you at any time.



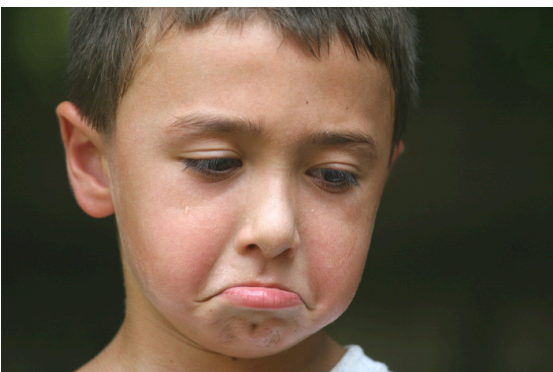
It is okay to clap, laugh, talk quietly or move around.



For this performance:

- The lights will stay partly on.
- Loud sounds will be quieter.
- Lighting effects will be softer.

# Things you will see in the show



This show includes:

- Strong language
- Arguments
- Violence
- Sad scenes
- Miscarriage
- Strobe and flashing lights
- An explosion
- Fake blood
- Smoke and haze

If you would like more information, please speak to a member of staff.

# Meet some of the people in the show



This is Elaine Cassidy.

She plays Annie and Kaz.



This is Katherine Pearce.

She plays Jenny.

More than 55 people perform in this show.

# The Story

EVEN THESE THINGS tells three stories.

The stories all take place in Manchester, and are connected.



Act 1 is set in 1846.

Annie Donovan wants revenge on the woman who killed her pig.



Act 2 is set in 1996.

It seems like a normal Saturday morning in Manchester.

Then a bomb explodes in the city centre.



Act 3 is set in 2026.

Kaz and Jenny are strangers who meet in a park.

They discuss Jenny moving back to Manchester after losing her baby.

# The stage

This is the stage.

Parts of the stage change during the show.



Act One.

There is a large cloth covering the stage.

The cloth looks old and stained.



Act Two.

The cloth is removed.

Different objects are brought onto the stage, like a mirror, car or postbox.

People working on the show will move these objects during the performance.



Act Three.

Grass and two park benches are added to the stage.

# The Costumes

The costumes change during the show.



Act One.

Annie wears old-fashioned clothes from a long time ago.

She wears a dirty dress and boots.

Annie is pregnant.



Act Two.

The actors wear everyday clothes from the 1990s that people might wear to school, work or the shops.



Act Three.

Jenny wears jeans, a striped shirt and a brown jacket.

Kaz wears a patterned dress, a denim jacket and boots.

# Need help?

You can contact the Royal Exchange Theatre.



Call Box Office on  
0161 833 9833.



Email us at  
[access@royalexchange.co.uk](mailto:access@royalexchange.co.uk)



Find information online [here](#).



talk to our staff in the theatre.

They wear red lanyards.

They are in Monday to  
Saturday from 12pm.